

DIRECTIONS - TRUCKS
to Springbank, from YASS

Contact Details:

David Purtle (mob)

0419 630 949

Lou Purtle (mob)

0412 322 036

Turn off the Hume Highway at the Coolac Interchange
onto the Muttama / Cootamundra Road



Travel approx. 3 klm

then

Turn Left onto Armours Road



This section left blank intentionally

Travel approx. 7 klm

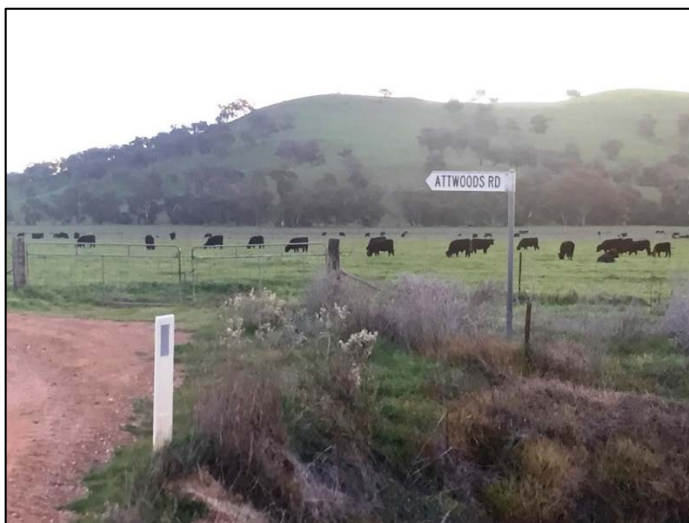
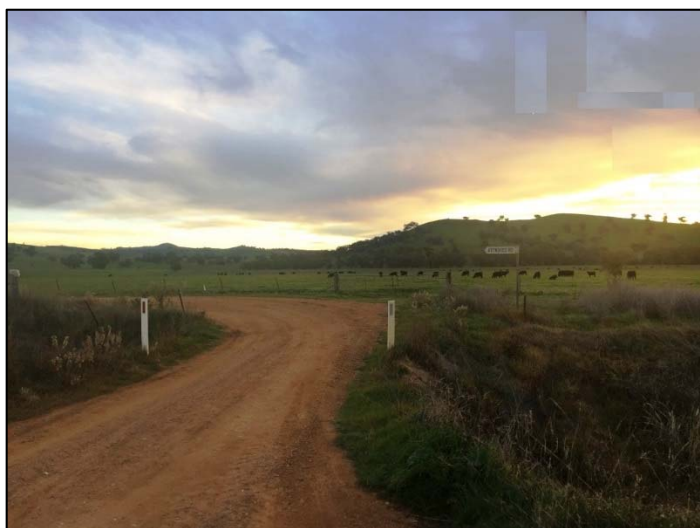
CAUTION - it's a gravel road with some sharp bends & ramps / grids

CAUTION - there is a sharp creek crossing – 2klm speed limit

CAUTION - of low hanging tree branches



Turn Left onto Attwoods Road

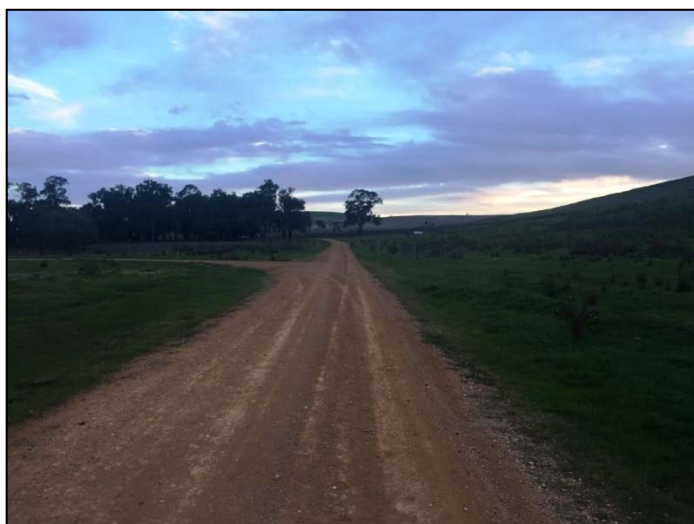


Travel approx. 2.6 klm

NB: You can see the Springbank house with the white roof as you travel along Attwoods Road

NB: Go Past the House Road Turnoff

No access for Trucks / Heavy Machinery on House Road (Weight LIMIT on Bridge)



Travel approx. 1.0 klm

Turn Left at the single gate on the road

Go through the double gates on Left Hand Side.

If you look to the North (left) you will see the sheds



Follow dirt track towards sheds

Go through four-way gates & travel towards the brown machinery shed



TRUCK - Directions to Springbank from Coolac Hume Highway Interchange

